

PC Waypoint Utility

User Guide

Document Number: 85022_3
Date: January 2005

Trademarks and registered trademarks

Autohelm, HSB, Raymarine, RayTech, RayTech RNS, Sail Pilot, SeaTalk and Sportpilot are registered trademarks of Raymarine Limited. Apelco is a registered trademark of Raymarine Holdings Limited (Registered in all major marketing territories).

AST, Autoadapt, Auto GST, Autoseastate, Autotrim, Bidata, Marine Intelligence, Maxiview, On Board, Raychart, Raynav, Raypilot, Raystar, ST40, ST60, Seaclutter, Smart Route, Tridata and Waypoint Navigation are trademarks of Raymarine Limited.

Windows, Excel and NT are registered trademarks of Microsoft Inc.

All other product names mentioned are trademarks or registered trademarks (if applicable) of their respective companies.

Handbook information

To the best of our knowledge, the information in this handbook was correct as it went to press. However, our policy of continuous product improvement and updating may change specifications without prior notice. As a result, unavoidable differences between the product and handbook may occur from time to time.

Raymarine cannot accept liability for any inaccuracies or omissions it may contain.

For the latest product information visit our website:

www.raymarine.com

Copyright: ©Raymarine 2005

PC Waypoint Utility

Introduction

The Raymarine PC Waypoint Utility enables you to create new and edit existing waypoints on your PC using a Microsoft Excel® spreadsheet. Waypoint information can then be archived to a CompactFlash (CF) card and transferred between your PC and a C-Series display.

The PC Waypoint Utility provides functions to:

- Convert and merge waypoints in a correctly formatted Excel spreadsheet file to a C-Series archive file.
- Convert the waypoints in a C-Series archive file to an Excel spreadsheet file.

The C-Series displays provide functions to:

- Retrieve an archive file from a CF card into the waypoint list.
- Save a waypoint list onto a CF card as an archive file.

Note: *This guide assumes that you are familiar with using Microsoft Excel and a C-Series display.*

PC requirements

Before you can begin installing the PC Waypoint Utility, you need to make sure that the PC you intend to use meets the minimum requirements for running the software., these are:

- Windows 98 or above.
- Microsoft 2000 or later.

In addition, you will also require the following items:

- CF card reader/writer.
- CF card.

Note: *To ensure the integrity of your chart data, Raymarine does not recommend using the Navionics Gold chart card for this procedure. For full details of CF card compatibility refer to your C-Series Installation Manual.*

Utility contents

The PC Waypoint Utility is downloaded as a ZIP file that contains the following files:

- PC Waypoint.exe.
- Archive.xls - sample Excel spreadsheet.

Installing the utility

To install the PC Waypoint Utility:

1. Double-click the **PCWaypoint.zip** file downloaded from www.raymarine.com.
2. Extract the files contained within the zip file to the required location on your PC.
The Utility is now ready for use.

Using the PC Waypoint Utility

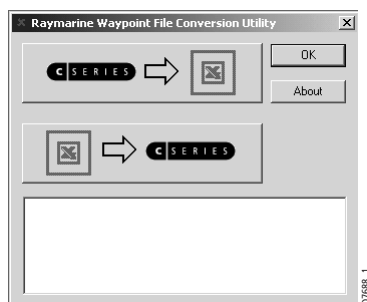
You can use the PC Waypoint Utility for the following functions:


- Converting an Excel file to a waypoint list archive.
- Converting a waypoint list archive to an Excel file.

Note: *To ensure that the format of the spreadsheet file is correct, use the supplied sample file in Microsoft Excel and follow the editing guidelines below.*

Converting an Excel file to a waypoint list archive

1. With the CF card installed in a card reader on your PC, run the PC Waypoint Utility **PCWaypoint.exe**. The following screen appears:



2. Click  D7689_1
 3. The OPEN FILE dialog box is displayed; select the Excel file containing the waypoints, then click OPEN.
 4. The SAVE AS dialog box is displayed. Select the CF card as the destination.
 5. Enter the filename **ARCHIVE.FSH**, click **SAVE**.
The Excel file is converted to a C-Series archive file on the CF card. If an archive file exists on the CF card you are prompted to replace it.
- Notes:** (1) *You must use the filename **ARCHIVE.FSH**.*
(2) *If you select to replace the archive file, the new waypoints are added to the existing archive and the original file is saved as **ARCHIVE.FSH.BAK**.*
6. Remove the CF card from the card reader, then place it in the card slot of your C-Series display.

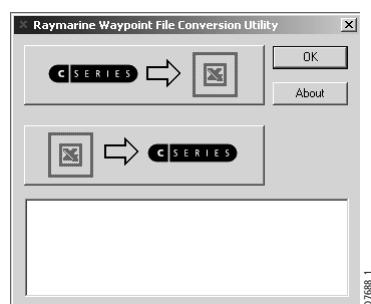
7. On your C-Series display, use the Archive and Transfer function (accessed via the DATA key) to RETRIEVE the required waypoints from the CF card.


The waypoints are added to the waypoint list: new waypoints are added in the appropriate groups and existing waypoints are updated. If duplicate waypoint names exist, the C-Series display will give the option to *Overwrite* or *Create As New*.

Note: You should be aware that the C-Series display does not uniquely identify a waypoint by its name: when a waypoint is created it is assigned a unique identifier; this identifier remains unchanged even when you edit the waypoint details. Thus, if you edit the waypoint name on a PC, when it is retrieved the C-Series display recognizes it and overwrites the original waypoint details.

Converting a waypoint list archive to an Excel file

1. On your C-Series display, use the Archive and Transfer function (accessed via the DATA key) to save the required waypoints to a CF card.
2. Follow the procedure in the C-Series Display Reference Manual to remove the CF card from the card slot.
3. With the CF card in a suitable card reader on your PC, run **PCWaypoint.exe**. The following screen will appear:



4. Click 
5. The OPEN FILE dialog box is displayed; select the source file ARCHIVE.FSH on the CF card, then click OPEN. The file is converted to an Excel file with the default name BOOK1.XLS.
6. When the conversion is complete the SAVE AS dialog box is displayed.
7. Select the required destination directory, click SAVE (you may rename this Excel file).

You can use Excel to edit the waypoints in this file. To ensure that the file maintains the correct format, follow *Guidelines for creating and editing waypoints* on page 4.

Guidelines for creating and editing waypoints

To ensure waypoints created or edited in Excel have the correct format, remember:

- Always use the supplied spreadsheet - **DO NOT alter the format in any way.**
- Ensure that the archive file that is retrieved into the C-Series display is named **ARCHIVE.FSH**

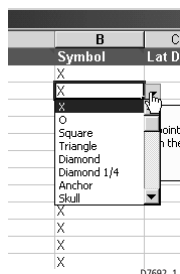
1	Name	Symbol	Lat Degr	Lat Mins	Lat N/S	Long Degr	Long Min	Long E/W	Temp C	Depth M	Time	Date	Comment	Group
2	Waypoint 1	X	50	49.269	N	1	18.109	W			23:16:48	1/2/04		My Waypoints
3	Waypoint 2	X	50	48.989	N	1	17.620	W			23:16:51	1/2/04		My Waypoints
4	Waypoint 3	X	50	48.454	N	1	17.456	W			23:17:00	1/2/04		My Waypoints
5	Waypoint 4	X	50	48.345	N	1	17.456	W			23:17:02	1/2/04		My Waypoints
6	Waypoint 5	X	50	48.175	N	1	17.513	W			23:17:06	1/2/04		My Waypoints
7	Waypoint 6	X	50	47.891	N	1	18.162	W			23:17:15	1/2/04		My Waypoints
8	Waypoint 7	X	50	47.462	N	1	18.701	W			23:17:22	1/2/04		My Waypoints
9	Waypoint 8	X	50	46.979	N	1	18.912	W			23:17:30	1/2/04		My Waypoints
10	Waypoint 9	X	50	46.696	N	1	18.542	W			23:17:37	1/2/04		My Waypoints
11	Waypoint 10	X	50	46.328	N	1	16.459	W			23:17:41	1/2/04		My Waypoints
12	Waypoint 11	X	50	46.328	N	1	15.746	W			23:17:42	1/2/04		My Waypoints
13	Waypoint 12	X	50	45.440	N	1	11.340	W			23:17:46	1/2/04		My Waypoints
14	Waypoint 13	X	50	45.475	N	1	8.154	W			23:18:01	1/2/04		My Waypoints
15														
16														
17														
18														

The following table will help you to create and edit waypoints with the correct format:

Excel field title	Notes	Default setting
Name	16 characters max. Duplicate names are not permitted	Waypoint XXX
Symbol	Select the waypoint symbol from the drop-down list	X
Lat Degrs*	Degrees of Latitude. Range 0 ⁰ - 89 ⁰	0
Lat Min*	Minutes of Latitude. Range 0 - 59.999'	0
Lat N/S	Latitude Hemisphere. Select from drop-down list	N
Long Degrs*	Degrees of Longitude. Range 0 ⁰ - 180 ⁰	0
Long Mins *	Minutes of Longitude. Range 0 - 59.999'	0
Long E/W	Longitude Hemisphere. Select from drop-down list	W
Temp C	Temperature in °Celsius. Range -10 ⁰ - 50 ⁰ C	None
Depth M	Depth in meters. Range 0 - 10,000	None
Time	Time waypoint was last edited	None
Date	Date waypoint was last edited	None
Comment	32 characters max. User-entered waypoint comment	None
Group	Group to which waypoint is assigned	None

Note: * Latitude and Longitude values should be entered using WGS84 geodetic datum. This is then converted to User's selected datum on the C-Series display.

Waypoint symbols



The C-Series displays support 36 different symbols, used to visually distinguish between different categories of waypoints on the electronic chart.

To accommodate these a drop-down list has been included in the spreadsheet to enable you to choose the required icon.

To access the drop-down list, click on the 'Symbol' field for the waypoint, scroll down until you find the required name and click. The name will now appear in the symbol field.

The waypoint symbols and their drop-down list titles are shown below:



Data validation

The PC Waypoint Utility uses data validation checking to ensure that correctly formatted information is being transferred. In the event that you enter erroneous or invalid information into a spreadsheet field, a pop-up message will alert you to the fact. Errors include:

- Letters entered in a numeric field.
- Maximum value for the field exceeded.(latitude and longitude).
- Maximum characters in the field exceeded (waypoint name or comments)

Follow the instructions on the prompt to resolve the error.

Technical support

To get Technical Support....

www.raymarine.com

United States

Raymarine Technical Services
1-800-539-5539 extension 2333, or
(603)-881-5200

Raymarine Technical Support
1-800-539-5539 extension 2444, or
(603)-881-5200

Product Repair and Service

Raymarine Product Repair Center
22 Cotton Road, Unit D,
Nashua, NH03603 - 4219
1-800-539-5539

Opening hours:
Monday through Friday 0815 - 1700
Eastern Standard or Eastern Daylight
Savings Time.

Europe

**Technical Support
Services
Accessories**

Raymarine UK Limited
Anchorage Park
Portsmouth
PO3 5TD
England

Tel:
+44(0)23 9271 4713

Fax:
+44(0)23 9266 1228

Help us to help you

When requesting service, please quote the following product information:
Equipment type • Model number • Serial number